

LEGEND

ROADS AND ROADWAY FEATURES

- UNIMPROVED ROAD
- GRAVEL
- PAVED ROAD
- UNPAVED HIGHWAY
- DIVIDED HIGHWAY
- INTERSTATE SYSTEM
- CITY STREETS

HIGHWAY BRIDGES

- BRIDGE 50 FEET AND OVER
- DRAWBRIDGE
- FERRY FRIED OR TOLL
- HIGHWAY GRADE SEPARATION
- HIGHWAY INTERCHANGE

ROAD SYSTEM DESIGNATION

- INTERSTATE NUMBERED
- U.S. NUMBERED
- STATE NUMBERED

RAILROADS

- RAILROAD STATION
- GRADE CROSSING
- RAILROAD ABOVE
- RAILROAD BELOW

AIRPORTS

- MILITARY AIRPORT
- AIRPORT, LIMITED FACILITIES
- LANDING AREA OR STRIP
- AIRPORT, COMPLETE FACILITIES
- AIRWAY LIGHT BEACON

DRAINAGE AND NATURAL FEATURES

- NARROW STREAM
- DRAINAGE DITCH
- LAKES AND RESERVOIRS
- OVERFLOW LAND
- MARSH OR SWAMP LAND

BOUNDARIES

- STATE BOUNDARY
- COUNTY BOUNDARY
- BEAT LINE
- CONGRESSIONAL TOWNSHIP
- SECTION LINE
- NATIONAL OR STATE FOREST
- RESERVATION PARKS, ETC.
- URBAN AREA COMPACT
- INCORPORATED PLACES
- UNINCORPORATED (DELIMITED AREAS)

NAVIGATION

- DOCK PIER OR LANDING
- LEVEE OR DIKE
- LEVEE OR DIKE WITH ROAD

CITY AND VILLAGE CENTERS

- COUNTY SEAT
- OTHER CITIES AND VILLAGES

MISCELLANEOUS

- TRANSMISSION STATION
- BENCH MARK WITH ELEVATION

PUBLIC SERVICE FACILITIES

- PIPELINE, GAS (D FOR OIL)
- TRANSMISSION LINE
- UNDERGROUND TELEPHONE CABLE
- OBSERVATION OR LOOKOUT TOWER
- HIGHWAY GARAGE
- POWER PLANT
- WEIGHT STATION
- HOSPITAL
- SEWAGE DISPOSAL PLANT
- COMMUNITY CENTER OR TOWNHALL
- NATIONAL PARK GARAGE
- FIRE STATION
- PUBLIC LIBRARY
- SANITARY LAND FILL
- CORRECTIONAL INSTITUTION
- POLICE STATION
- GRAVEL PIT

CONSERVATION AND RECREATION

- MOTEL OR HOTEL
- CAMP OR LODGE
- HISTORIC OR SCENIC SITE
- FAR GROUNDS OR HUNTING COURSE
- SMALL PARK
- GOLF COURSE OR COUNTRY CLUB

INDUSTRIAL

- FACTORY OR INDUSTRY
- SEASONAL INDUSTRY

CHURCHES AND CEMETERIES

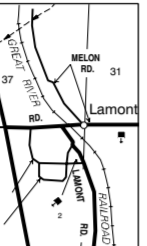
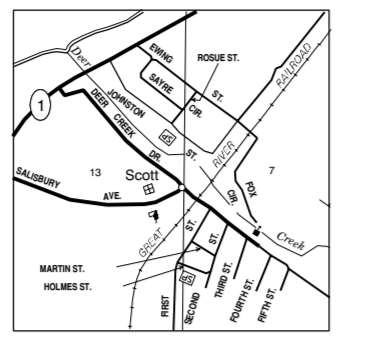
- CHURCH
- CEMETERY
- CHURCH WITH CEMETERY ADJACENT

EDUCATION

- SCHOOL

MISCELLANEOUS STRUCTURES

- ARMORY
- FORT, ARMY CAMP



MISSISSIPPI DEPARTMENT OF TRANSPORTATION  
COPYRIGHT LICENSE AGREEMENT

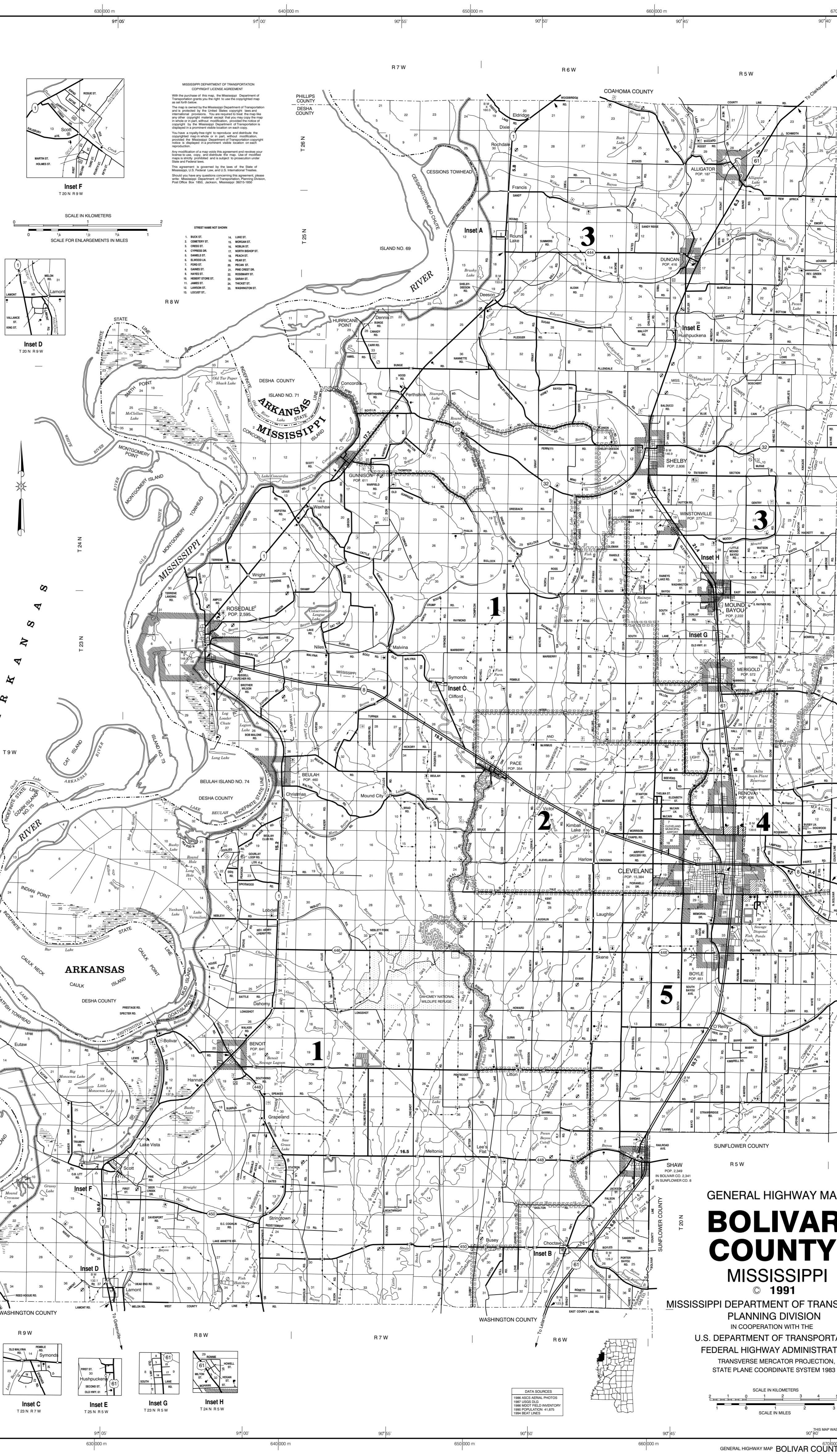
With the purchase of this map, the Mississippi Department of Transportation grants you the right to use the copyrighted map as follows:

The map is owned by the Mississippi Department of Transportation and is protected by the United States copyright laws and international provisions. You are required to read the map like any other copyrighted material and may not copy the map or any part of it without the express written permission of the Mississippi Department of Transportation. Any reproduction of a map without this agreement and/or without the copyright notice is prohibited and is subject to prosecution under State and Federal laws.

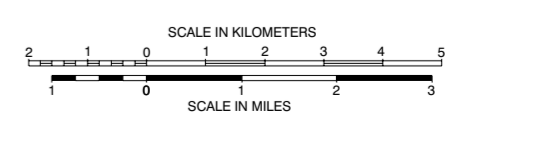
You have a royalty-free right to reproduce and distribute the copyrighted map in whole or in part, without modification, provided the Mississippi Department of Transportation copyright notice is displayed in a prominent visible location on each reproduction.

This agreement is governed by the laws of the State of Mississippi. U.S. Federal and U.S. International Treaties should you have any questions concerning this agreement, please write: Mississippi Department of Transportation, Planning Division, Post Office Box 1853, Jackson, Mississippi 39219-1853.

- STREET NAMES NOT SHOWN
1. CEMETERY ST.
  2. CHERRY ST.
  3. CYPRESS DR.
  4. DANIELS ST.
  5. HANCOCK LA.
  6. POND ST.
  7. GARDNER ST.
  8. HAYES ST.
  9. HENRY FOREST ST.
  10. JAMES ST.
  11. LAMONT ST.
  12. LOCUST ST.
  13. LINES ST.
  14. NOLAN ST.
  15. NORTH BERRY ST.
  16. PEACH ST.
  17. PEARCE ST.
  18. PICKER LA.
  19. PINE HOLLOW ST.
  20. ROSEMARY ST.
  21. SARAH ST.
  22. THOMAS ST.
  23. WASHINGTON ST.



GENERAL HIGHWAY MAP  
**BOLIVAR COUNTY**  
MISSISSIPPI  
© 1991  
MISSISSIPPI DEPARTMENT OF TRANSPORTATION  
PLANNING DIVISION  
IN COOPERATION WITH THE  
U.S. DEPARTMENT OF TRANSPORTATION  
FEDERAL HIGHWAY ADMINISTRATION  
TRANSVERSE MERCATOR PROJECTION,  
STATE PLANE COORDINATE SYSTEM 1983



DATA SOURCES  
1986 AERIAL PHOTOS  
1987 USGS DIG  
1986 MOBILE FIELD INVENTORY  
1990 POPULATION 41,875  
1994 BEAT LINES

